

Report Number : EGL1501878939

October 11, 2022



EUROPEAN GEMOLOGICAL LABORATORY

**GRADING RESULTS**

**Natural Diamond**

Shape & Cut Style **Princess**

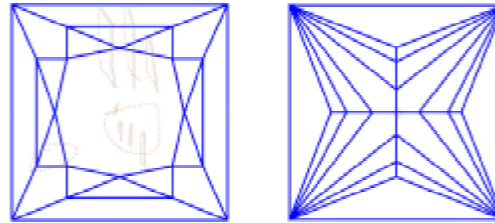
Carat Weight **1.00 Ct.**

Color Grade **D**

Clarity Grade **SI2**

**Clarity Representation - Magnification: x10**

Internal characteristics shown in red. External characteristics and naturals shown in green. Extra facets shown in black. Symbols indicate nature and location of identified characteristics, not their actual size. Hairline feathers in girdle, minor bearding, and minor details of polish and finish not shown.



**ISO 9001-2000 / -IQNet-**

**INTERNATIONAL CLARITY SCALE**

**INTERNATIONAL COLOR SCALE**

|                            |                     |                   |                  |
|----------------------------|---------------------|-------------------|------------------|
| Flawless                   | Internally Flawless | Colorless         | * D *            |
| Very Very Slight Inclusion | VVS1                | Near Colorless    | G<br>H<br>I<br>J |
|                            | VVS2                |                   | Tinted White     |
| Very Slight Inclusion      | VS1                 | Very Light Yellow |                  |
|                            | VS2                 |                   | Inclusion        |
| Slight Inclusion           | SI1                 | Fancy Yellow      |                  |
|                            | * SI2 *             |                   |                  |
|                            | SI3                 |                   |                  |

**ADDITIONAL GRADING INFORMATION**

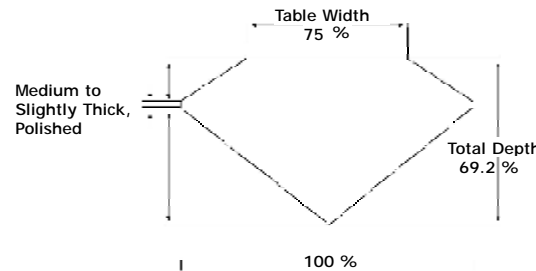
Measurements **5.59 x 5.52 x 3.82 mm**

Polish **Very Good**

Symmetry **Very Good**

Fluorescence **None**

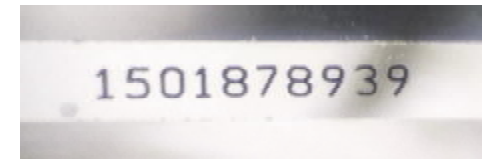
**PROPORTIONS DIAGRAM**



\* Profile for representation purposes only

**COMMENTS**

- Report number appears on the girdle.



Online verification service at:  
[www.eqlhk.com.hk](http://www.eqlhk.com.hk)

Note: EGL watermark will appear under UV source.