

Report Number : EGL1504758939

October 23, 2017



EUROPEAN GEMOLOGICAL LABORATORY

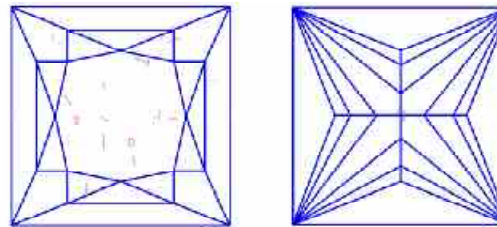
**GRADING RESULTS**

Natural Diamond  
 Shape & Cut Style **Princess**  
 Carat Weight **1.72 Ct.**  
 Color Grade **E**  
 Clarity Grade **SI2**

**Clarity Representation - Magnification: x10**

Internal characteristics shown in red. External characteristics and naturals shown in green. Extra facets shown in black. Symbols indicate nature and

in girdle, minor bearding, and minor details of polish and finish not shown.



**ISO 9001-2000 / -IQNet-**

**INTERNATIONAL CLARITY SCALE**

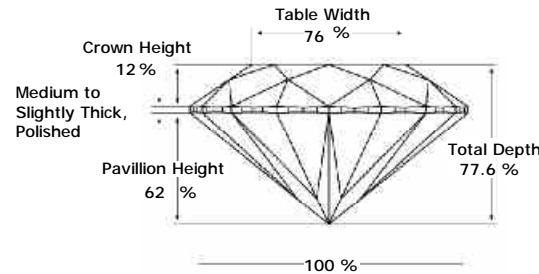
**INTERNATIONAL COLOR SCALE**

Flawless	Internally Flawless	Colorless	D * E * F
	Very Very Slight Inclusion	Near Colorless	G H I J
Very Slight Inclusion	VS1		
	VS2		
Slight Inclusion	SI1	Very Light Yellow	N O P Q R
	* SI2 *		
	SI3		
Inclusion	I1	Light Yellow	S-Z
	I2		
	I3		
		Fancy Yellow	

**ADDITIONAL GRADING INFORMATION**

Measurements **6.35 - 6.30 x 4.89 mm**  
 Polish **Excellent**  
 Symmetry **Excellent**  
 Fluorescence **Faint**

**PROPORTIONS DIAGRAM**

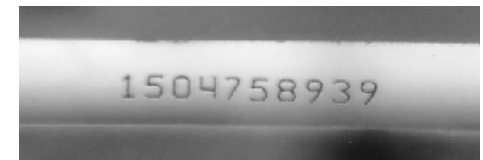


\* Profile for representation purposes only

**LIGHT PERFORMANCE**

**FIRE TRACE**  
 Light Trace Analyzer  
 Predicts light performance

**B - Brightness**      **F - Fire**      **S - Scintillation**



**COMMENTS**

- Report number appears on the girdle.

Note: EGL watermark will appear under UV source.

Online verification service at:  
[www.eglhk.com.hk](http://www.eglhk.com.hk)

