

Report Number : EGL1505296230

May 23, 2018



EUROPEAN GEMOLOGICAL LABORATORY

GRADING RESULTS

Natural Diamond
Shape & Cut Style **Oval**
Carat Weight **2.02 Ct.**
Color Grade **H**
Clarity Grade **SI 2**

ADDITIONAL GRADING INFORMATION

Measurements **10.72 - 6.37 x 4.38 mm**
Polish **Very Good**
Symmetry **Very Good**
Fluorescence **Faint**

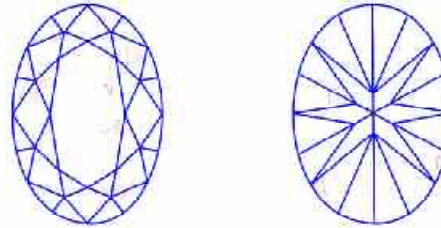
COMMENTS

- Report number appears on the girdle.

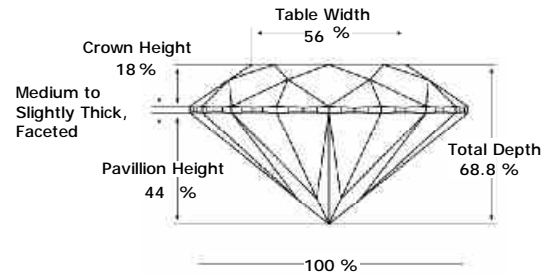
Clarity Representation - Magnification: x10

Internal characteristics shown in red. External characteristics and naturals shown in green. Extra facets shown in black. Symbols indicate nature and

in girdle, minor bearding, and minor details of polish and finish not shown.



PROPORTIONS DIAGRAM



* Profile for representation purposes only

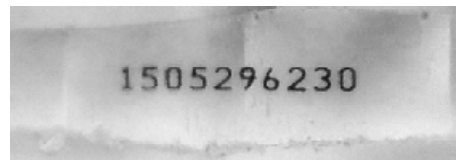
ISO 9001-2000 / -IQNet-

INTERNATIONAL CLARITY SCALE

| | |
|----------------------------|---------------------|
| Flawless | Internally Flawless |
| Very Very Slight Inclusion | VVS1 |
| | VVS2 |
| Very Slight Inclusion | VS1 |
| | VS2 |
| Slight Inclusion | SI1 |
| | * SI 2 * |
| | SI3 |
| Inclusion | I1 |
| | I2 |
| | I3 |

INTERNATIONAL COLOR SCALE

| | |
|-------------------|-----------------------|
| Colorless | D E F |
| Near Colorless | G * H * |
| | I J |
| Tinted White | K L M |
| Very Light Yellow | N O P Q R |
| Light Yellow | S-Z |
| Fancy Yellow | |



Note: EGL watermark will appear under UV source.

Online verification service at:
www.eglhk.com.hk

