

Report Number : EGL1506370729

October 29, 2019



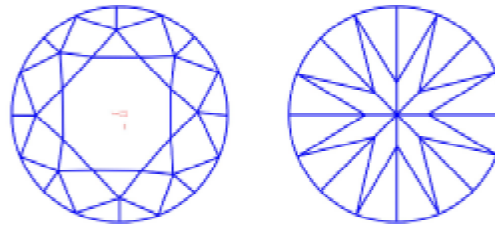
EUROPEAN GEMOLOGICAL LABORATORY

**GRADING RESULTS**

Natural Diamond  
 Shape & Cut Style **Round Brilliant**  
 Carat Weight **1.50 Ct.**  
 Color Grade **D**  
 Clarity Grade **VS1**  
 Cut Grade **Excellent**

**Clarity Representation - Magnification: x10**

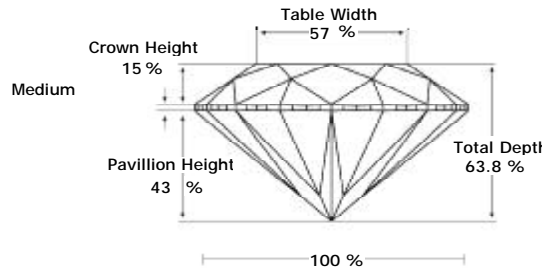
Internal characteristics shown in red. External characteristics and naturals shown in green. Extra facets shown in black. Symbols indicate nature and location of identified characteristics, not their actual size. Hairline feathers in girdle, minor bearding, and minor details of polish and finish not shown.



**ADDITIONAL GRADING INFORMATION**

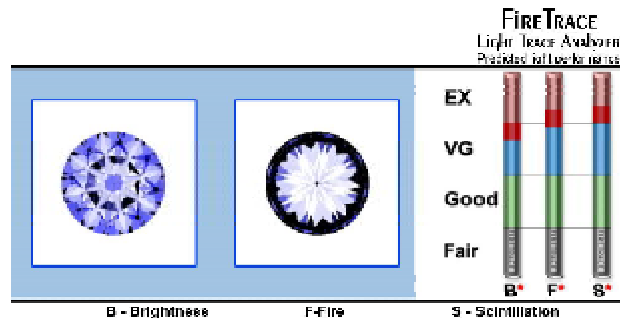
Measurements **7.19 - 7.16 x 4.58 mm**  
 Polish **Excellent**  
 Symmetry **Excellent**  
 Fluorescence **Slight**

**PROPORTIONS DIAGRAM**



\* Profile for representation purposes only

**LIGHT PERFORMANCE**

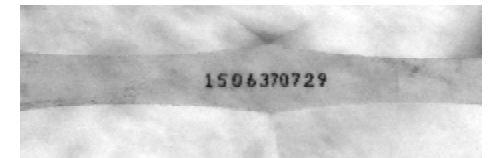


**ISO 9001-2000 / -IQNet-**

**INTERNATIONAL CLARITY SCALE**

**INTERNATIONAL COLOR SCALE**

Flawless	Internally Flawless	Colorless	<b>* D *</b> E F
Very Very Slight Inclusion	VVS1	Near Colorless	G H I J
	VVS2		Tinted White
Very Slight Inclusion	<b>* VS1 *</b>	Very Light Yellow	
	VS2		Light Yellow
Slight Inclusion	S11		
	S12		
	S13		
Inclusion	I1		
	I2		
	I3		



**COMMENTS**

- Report number appears on the girdle.
- "EXCELLENT IDEAL CUT"-The quality of the cut of this diamond achieves Excellence in symmetry and proportions, thus obtaining the optimal dispersion of light and brilliance.

Note: EGL watermark will appear under UV source.

Online verification service at:  
[www.eglab.com/bk](http://www.eglab.com/bk)

