

Report Number : EGL1600980428

April 27, 2021



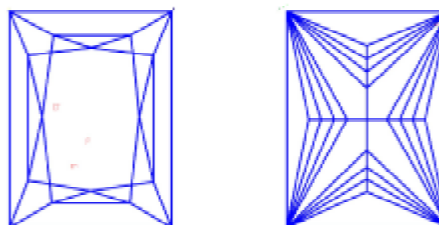
EUROPEAN GEMOLOGICAL LABORATORY

**GRADING RESULTS**

Natural Diamond  
 Shape & Cut Style Princess  
 Carat Weight 4.46 Ct.  
 Color Grade H  
 Clarity Grade VS2

**Clarity Representation - Magnification: x10**

Internal characteristics shown in red. External characteristics and naturals shown in green. Extra facets shown in black. Symbols indicate nature and location of identified characteristics, not their actual size. Hairline feathers in girdle, minor bearding, and minor details of polish and finish not shown.



**ISO 9001-2000 / -IQNet-**

**INTERNATIONAL CLARITY SCALE**

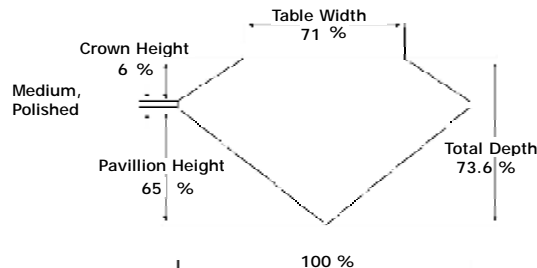
**INTERNATIONAL COLOR SCALE**

Flawless	Internally Flawless	Colorless	D E F
Very Very Slight Inclusion	VVS1	Near Colorless	G * H *
	VVS2		I J
Very Slight Inclusion	VS1	Tinted White	K L M
	* VS2 *		
Slight Inclusion	SI1	Very Light Yellow	N O P Q R
	SI2		
	SI3		
Inclusion	I1	Light Yellow	S-Z
	I2		
	I3	Fancy Yellow	

**ADDITIONAL GRADING INFORMATION**

Measurements 9.69 - 8.89 x 6.54 mm  
 Polish Very Good  
 Symmetry Excellent  
 Fluorescence None

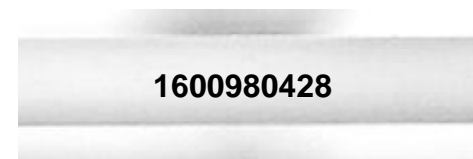
**PROPORTIONS DIAGRAM**



\* Profile for representation purposes only

**COMMENTS**

- Report number appears on the girdle.



Online verification service at:  
[www.eqlhk.com.hk](http://www.eqlhk.com.hk)

Note: EGL watermark will appear under UV source.