

Report Number : EGL1601295731

September 20, 2021



EUROPEAN GEMOLOGICAL LABORATORY

GRADING RESULTS

Natural Diamond

Shape & Cut Style **Round Brilliant**

Carat Weight **0.79 Ct.**

Color Grade **G**

Clarity Grade **SI2**

Cut Grade **Excellent**

ADDITIONAL GRADING INFORMATION

Measurements **5.83 - 5.81 x 3.63 mm**

Polish **Excellent**

Symmetry **Excellent**

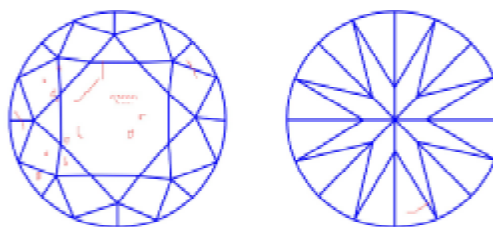
Fluorescence **Faint**

COMMENTS

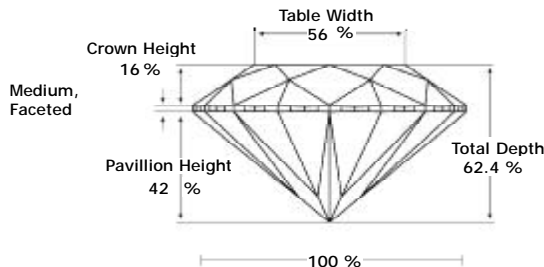
- Report number appears on the girdle.
- "EXCELLENT IDEAL CUT"-The quality of the cut of this diamond achieves Excellence in symmetry and proportions, thus obtaining the optimal dispersion of light and brilliance.

Clarity Representation - Magnification: x10

Internal characteristics shown in red. External characteristics and naturals shown in green. Extra facets shown in black. Symbols indicate nature and location of identified characteristics, not their actual size. Hairline feathers in girdle, minor bearding, and minor details of polish and finish not shown.



PROPORTIONS DIAGRAM



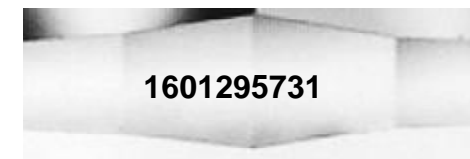
* Profile for representation purposes only

ISO 9001-2000 / -IQNet-

INTERNATIONAL CLARITY SCALE

INTERNATIONAL COLOR SCALE

Flawless	Internally Flawless	Colorless	D E F	
Very Very Slight Inclusion	VVS1	Near Colorless	* G *	
	VVS2		H I J	
Very Slight Inclusion	VS1	Tinted White	K L M	
	VS2		Very Light Yellow	N O P Q R
Slight Inclusion	SI1	Light Yellow		S-Z
	* SI2 *			Fancy Yellow
	SI3			
Inclusion	I1			
	I2			
	I3			



Online verification service at:
www.eqlhk.com.hk

Note: EGL watermark will appear under UV source.