

Report Number : EGL1700063219

October 26, 2021



EUROPEAN GEMOLOGICAL LABORATORY

**GRADING RESULTS**

**Natural Diamond**

Shape & Cut Style	Round Brilliant
Carat Weight	1.70 Ct.
Color Grade	I
Clarity Grade	SI2
Cut Grade	Excellent

**ADDITIONAL GRADING INFORMATION**

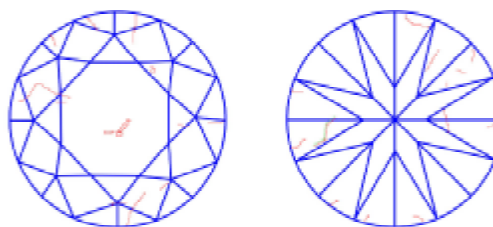
Measurements	7.60 - 7.54 x 4.75 mm
Polish	Excellent
Symmetry	Excellent
Fluorescence	Slight

**COMMENTS**

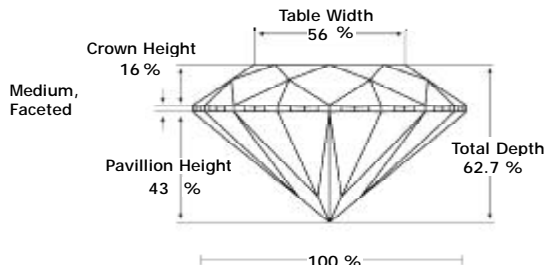
- Report number appears on the girdle.
- "EXCELLENT IDEAL CUT"-The quality of the cut of this diamond achieves Excellence in symmetry and proportions, thus obtaining the optimal dispersion of light and brilliance.

**Clarity Representation - Magnification: x10**

Internal characteristics shown in red. External characteristics and naturals shown in green. Extra facets shown in black. Symbols indicate nature and location of identified characteristics, not their actual size. Hairline feathers in girdle, minor bearding, and minor details of polish and finish not shown.



**PROPORTIONS DIAGRAM**



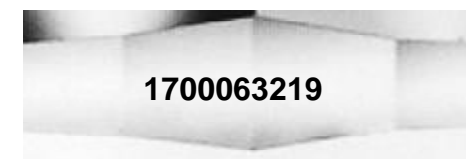
\* Profile for representation purposes only

**ISO 9001-2000 / -IQNet-**

**INTERNATIONAL CLARITY SCALE**

**INTERNATIONAL COLOR SCALE**

Flawless	Internally Flawless	Colorless	D E F
Very Very Slight Inclusion	VVS1	Near Colorless	G H
	VVS2		* I *
Very Slight Inclusion	VS1	Tinted White	J
	VS2		K L M
Slight Inclusion	SI1		Very Light Yellow
	* SI2 *	S-Z	
	SI3		
Inclusion	I1	Fancy Yellow	
	I2		
	I3		



Online verification service at:  
[www.eqlhk.com.hk](http://www.eqlhk.com.hk)

Note: EGL watermark will appear under UV source.