

Report Number : EGL1700187630

December 07, 2021



EUROPEAN GEMOLOGICAL LABORATORY

**GRADING RESULTS**

**Natural Diamond**

Shape & Cut Style                      Round Brilliant

Carat Weight                              2.02 Ct.

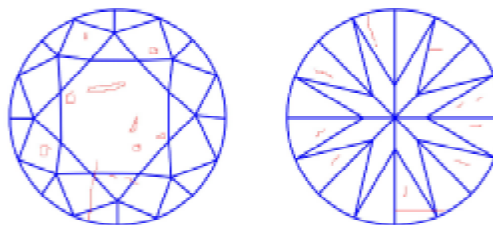
Color Grade                                      G

Clarity Grade                                      SI2

Cut Grade    Excellent

**Clarity Representation - Magnification: x10**

Internal characteristics shown in red. External characteristics and naturals shown in green. Extra facets shown in black. Symbols indicate nature and location of identified characteristics, not their actual size. Hairline feathers in girdle, minor bearding, and minor details of polish and finish not shown.



**ISO 9001-2000 / -IQNet-**

**INTERNATIONAL CLARITY SCALE**

**INTERNATIONAL COLOR SCALE**

Flawless	Internally Flawless	Colorless	D E F	
Very Very Slight Inclusion	VVS1	Near Colorless	* G *	
	VVS2		H I J	
Very Slight Inclusion	VS1	Tinted White	K L M	
	VS2		Very Light Yellow	N O P Q R
Slight Inclusion	SI1	Light Yellow		S-Z
	* SI2 *			
	SI3		Fancy Yellow	
Inclusion	I1			
	I2			
	I3			

**ADDITIONAL GRADING INFORMATION**

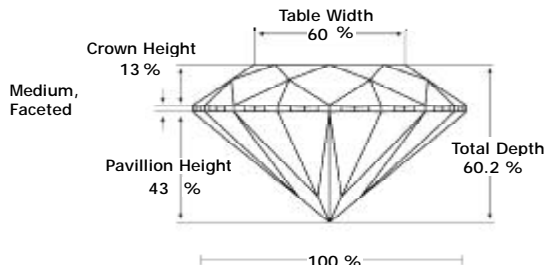
Measurements                      8.17 - 8.08 x 4.89 mm

Polish    Excellent

Symmetry    Excellent

Fluorescence                                      None

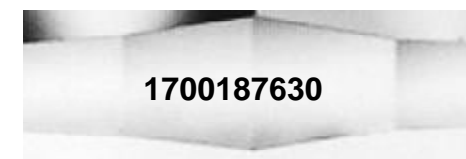
**PROPORTIONS DIAGRAM**



\* Profile for representation purposes only

**COMMENTS**

- Report number appears on the girdle.
- "EXCELLENT IDEAL CUT"-The quality of the cut of this diamond achieves Excellence in symmetry and proportions, thus obtaining the optimal dispersion of light and brilliance.



Online verification service at:  
[www.eqlhk.com.hk](http://www.eqlhk.com.hk)

Note: EGL watermark will appear under UV source.