

Report Number : EGL1700221619

December 21, 2021



EUROPEAN GEMOLOGICAL LABORATORY

**GRADING RESULTS**

**Natural Diamond**

Shape & Cut Style **Round Brilliant**

Carat Weight **4.08 Ct.**

Color Grade **D**

Clarity Grade **SI 1**

Cut Grade **Excellent**

**ADDITIONAL GRADING INFORMATION**

Measurements **10.35 - 10.20 x 6.26 mm**

Polish **Excellent**

Symmetry **Excellent**

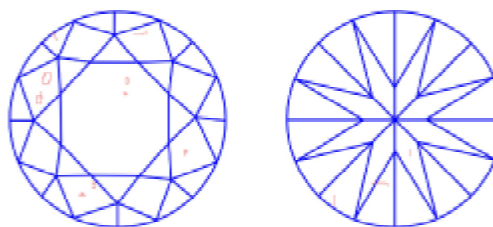
Fluorescence **None**

**COMMENTS**

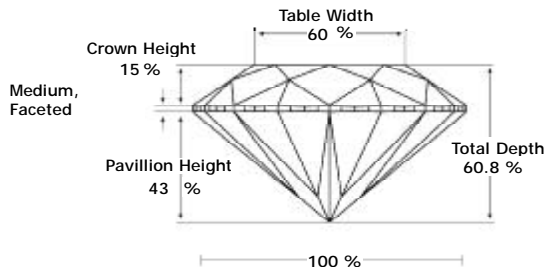
- Report number appears on the girdle.
- "EXCELLENT IDEAL CUT"-The quality of the cut of this diamond achieves Excellence in symmetry and proportions, thus obtaining the optimal dispersion of light and brilliance.

**Clarity Representation - Magnification: x10**

Internal characteristics shown in red. External characteristics and naturals shown in green. Extra facets shown in black. Symbols indicate nature and location of identified characteristics, not their actual size. Hairline feathers in girdle, minor bearding, and minor details of polish and finish not shown.



**PROPORTIONS DIAGRAM**



\* Profile for representation purposes only

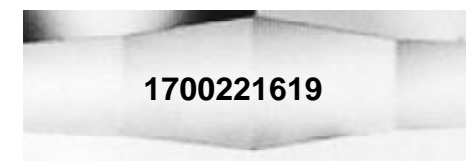
**ISO 9001-2000 / -IQNet-**

**INTERNATIONAL CLARITY SCALE**

Flawless	Internally Flawless
Very Very Slight Inclusion	VVS1
	VVS2
Very Slight Inclusion	VS1
	VS2
Slight Inclusion	<b>* SI 1 *</b>
	SI2
	SI3
Inclusion	I1
	I2
	I3

**INTERNATIONAL COLOR SCALE**

Colorless	<b>* D *</b> E F	
Near Colorless	G H I J	
	K L M	
Tinted White	N O P Q R	
	Light Yellow	S-Z
		Fancy Yellow



Online verification service at:  
[www.eqlhk.com.hk](http://www.eqlhk.com.hk)

Note: EGL watermark will appear under UV source.