

Report Number : EGL1700314521

January 26, 2022



EUROPEAN GEMOLOGICAL LABORATORY

**GRADING RESULTS**

**Natural Diamond**

Shape & Cut Style                      Round Brilliant

Carat Weight                              0.71 Ct.

Color Grade                                G

Clarity Grade                               SI2

Cut Grade                                  Excellent

**ADDITIONAL GRADING INFORMATION**

Measurements                            5.76 - 5.69 x 3.49 mm

Polish                                        Excellent

Symmetry                                  Excellent

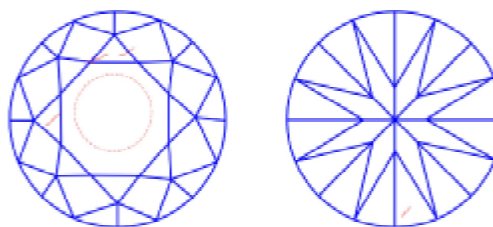
Fluorescence                              None

**COMMENTS**

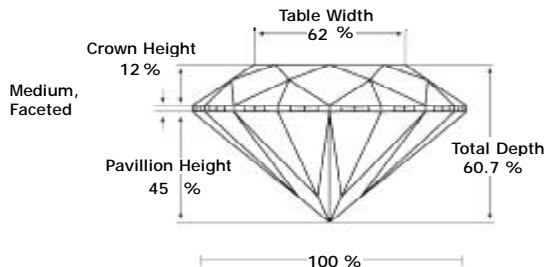
- Report number appears on the girdle.
- "EXCELLENT IDEAL CUT"-The quality of the cut of this diamond achieves Excellence in symmetry and proportions, thus obtaining the optimal dispersion of light and brilliance.

**Clarity Representation - Magnification: x10**

Internal characteristics shown in red. External characteristics and naturals shown in green. Extra facets shown in black. Symbols indicate nature and location of identified characteristics, not their actual size. Hairline feathers in girdle, minor bearding, and minor details of polish and finish not shown.



**PROPORTIONS DIAGRAM**



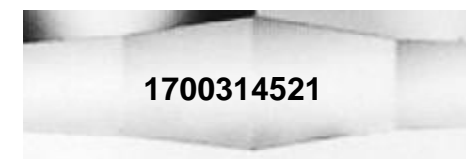
\* Profile for representation purposes only

**ISO 9001-2000 / -IQNet-**

**INTERNATIONAL CLARITY SCALE**

**INTERNATIONAL COLOR SCALE**

Flawless	Internally Flawless	Colorless	D E F	
Very Very Slight Inclusion	VVS1	Near Colorless	* G *	
	VVS2		H I J	
Very Slight Inclusion	VS1	Tinted White	K L M	
	VS2		Very Light Yellow	N O P Q R
Slight Inclusion	SI1	Light Yellow		S-Z
	* SI2 *			Fancy Yellow
	SI3			
Inclusion	I1			
	I2			
	I3			



Online verification service at:  
[www.eqlhk.com.hk](http://www.eqlhk.com.hk)

Note: EGL watermark will appear under UV source.