

Report Number : EGL1700366023

February 16, 2022



EUROPEAN GEMOLOGICAL LABORATORY

**GRADING RESULTS**

**Natural Diamond**

Shape & Cut Style	Round Brilliant
Carat Weight	0.52 Ct.
Color Grade	F
Clarity Grade	VS2
Cut Grade	Excellent

**ADDITIONAL GRADING INFORMATION**

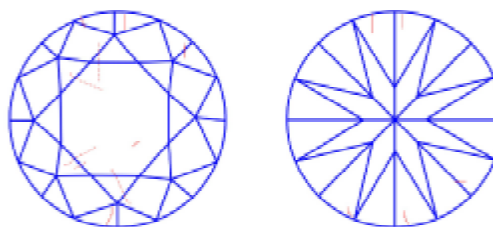
Measurements	5.07 - 5.03 x 3.19 mm
Polish	Excellent
Symmetry	Excellent
Fluorescence	Slight

**COMMENTS**

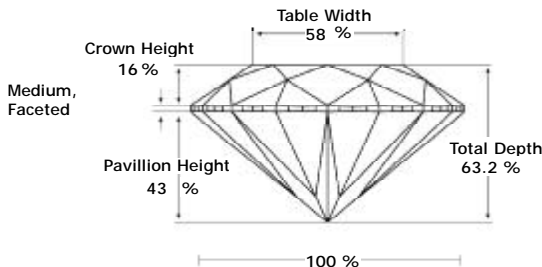
- Report number appears on the girdle.
- "EXCELLENT IDEAL CUT"-The quality of the cut of this diamond achieves Excellence in symmetry and proportions, thus obtaining the optimal dispersion of light and brilliance.

**Clarity Representation - Magnification: x10**

Internal characteristics shown in red. External characteristics and naturals shown in green. Extra facets shown in black. Symbols indicate nature and location of identified characteristics, not their actual size. Hairline feathers in girdle, minor bearding, and minor details of polish and finish not shown.



**PROPORTIONS DIAGRAM**



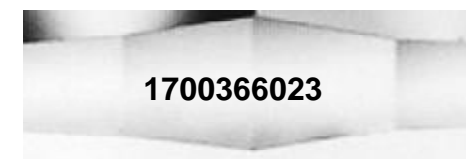
\* Profile for representation purposes only

**ISO 9001-2000 / -IQNet-**

**INTERNATIONAL CLARITY SCALE**

**INTERNATIONAL COLOR SCALE**

Flawless	Internally Flawless	Colorless	D E * F *	
Very Very Slight Inclusion	VVS1	Near Colorless	G H I J	
	VVS2		Tinted White	K L M
Very Slight Inclusion	VS1	Very Light Yellow		N O P Q R
	* VS2 *		Light Yellow	S-Z
	Slight Inclusion			SI1
SI2				
SI3				
Inclusion	I1			
	I2			
	I3			



Online verification service at:  
[www.eqlhk.com.hk](http://www.eqlhk.com.hk)

Note: EGL watermark will appear under UV source.