

Report Number : EGL1700510721

April 11, 2022



EUROPEAN GEMOLOGICAL LABORATORY

GRADING RESULTS

Natural Diamond

Shape & Cut Style	Round Brilliant
Carat Weight	1.50 Ct.
Color Grade	I
Clarity Grade	SI 1
Cut Grade	Excellent

ADDITIONAL GRADING INFORMATION

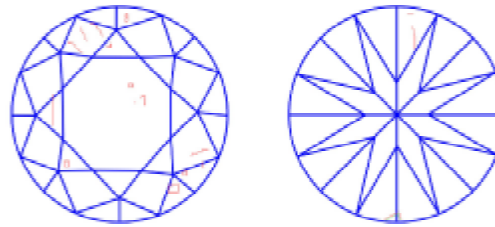
Measurements	7.31 - 7.26 x 4.49 mm
Polish	Excellent
Symmetry	Excellent
Fluorescence	Slight

COMMENTS

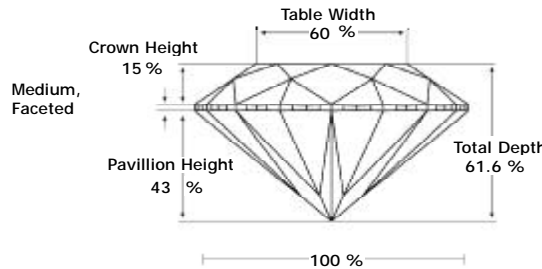
- Report number appears on the girdle.
- "EXCELLENT IDEAL CUT"-The quality of the cut of this diamond achieves Excellence in symmetry and proportions, thus obtaining the optimal dispersion of light and brilliance.

Clarity Representation - Magnification: x10

Internal characteristics shown in red. External characteristics and naturals shown in green. Extra facets shown in black. Symbols indicate nature and location of identified characteristics, not their actual size. Hairline feathers in girdle, minor bearding, and minor details of polish and finish not shown.



PROPORTIONS DIAGRAM



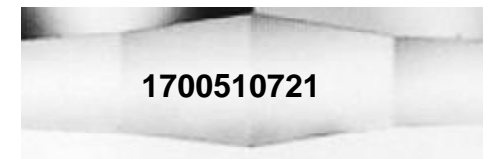
* Profile for representation purposes only

ISO 9001-2000 / -IQNet-

INTERNATIONAL CLARITY SCALE

INTERNATIONAL COLOR SCALE

Flawless	Internally Flawless	Colorless	D E F	
Very Very Slight Inclusion	VVS1	Near Colorless	G H	
	VVS2		* I *	
Very Slight Inclusion	VS1	Tinted White	J	
	VS2		K L M	
Slight Inclusion	* SI 1 *		Very Light Yellow	N O P Q R
	SI2	Light Yellow		S-Z
	SI3			Fancy Yellow
Inclusion	I1			
	I2			
	I3			



Online verification service at:
www.eqlhk.com.hk

Note: EGL watermark will appear under UV source.