

Report Number : EGL1700629126

June 01, 2022



EUROPEAN GEMOLOGICAL LABORATORY

GRADING RESULTS

Natural Diamond

Shape & Cut Style	Round Brilliant
Carat Weight	0.90 Ct.
Color Grade	F
Clarity Grade	SI2
Cut Grade	Excellent

ADDITIONAL GRADING INFORMATION

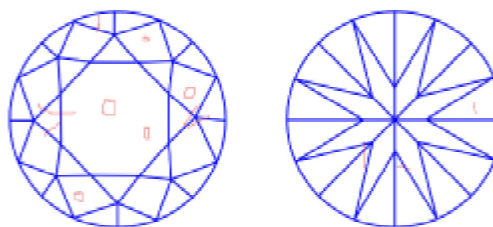
Measurements	6.09 - 6.05 x 3.85 mm
Polish	Excellent
Symmetry	Excellent
Fluorescence	None

COMMENTS

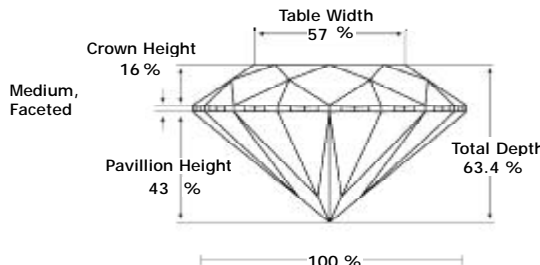
- Report number appears on the girdle.
- "EXCELLENT IDEAL CUT"-The quality of the cut of this diamond achieves Excellence in symmetry and proportions, thus obtaining the optimal dispersion of light and brilliance.

Clarity Representation - Magnification: x10

Internal characteristics shown in red. External characteristics and naturals shown in green. Extra facets shown in black. Symbols indicate nature and location of identified characteristics, not their actual size. Hairline feathers in girdle, minor bearding, and minor details of polish and finish not shown.



PROPORTIONS DIAGRAM



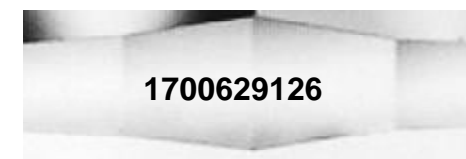
* Profile for representation purposes only

ISO 9001-2000 / -IQNet-

INTERNATIONAL CLARITY SCALE

INTERNATIONAL COLOR SCALE

Flawless	Internally Flawless	Colorless	D E * F *
Very Very Slight Inclusion	VVS1	Near Colorless	G H I J
	VVS2		Tinted White
Very Slight Inclusion	VS1	Very Light Yellow	
	VS2		Inclusion
Slight Inclusion	SI1	Fancy Yellow	
	* SI2 *		
	SI3		



Online verification service at:
www.eqlhk.com.hk

Note: EGL watermark will appear under UV source.