

Report Number : EGL1700780023

August 30, 2022



EUROPEAN GEMOLOGICAL LABORATORY

**GRADING RESULTS**

**Natural Diamond**

Shape & Cut Style **Princess**

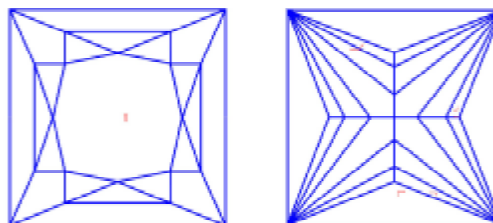
Carat Weight **1.50 Ct.**

Color Grade **G**

Clarity Grade **VS1**

**Clarity Representation - Magnification: x10**

Internal characteristics shown in red. External characteristics and naturals shown in green. Extra facets shown in black. Symbols indicate nature and location of identified characteristics, not their actual size. Hairline feathers in girdle, minor bearding, and minor details of polish and finish not shown.



**ISO 9001-2000 / -IQNet-**

**INTERNATIONAL CLARITY SCALE**

**INTERNATIONAL COLOR SCALE**

Flawless	Internally Flawless	Colorless	D E F
Very Very Slight Inclusion	VVS1	Near Colorless	* G *
	VVS2		H I J
Very Slight Inclusion	* VS1 *	Tinted White	K L M
	VS2		Very Light Yellow
Slight Inclusion	SI1	N O P Q R	
	SI2	Light Yellow	
	SI3		
Inclusion	I1	Fancy Yellow	
	I2		
	I3		

**ADDITIONAL GRADING INFORMATION**

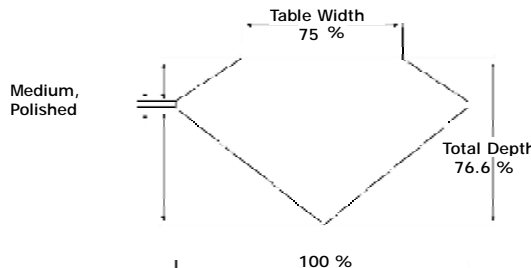
Measurements **6.36 x 6.16 x 4.72 mm**

Polish **Excellent**

Symmetry **Excellent**

Fluorescence **None**

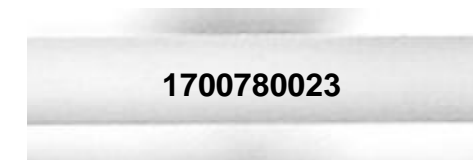
**PROPORTIONS DIAGRAM**



\* Profile for representation purposes only

**COMMENTS**

- Report number appears on the girdle.



Online verification service at:  
[www.eqlhk.com.hk](http://www.eqlhk.com.hk)

Note: EGL watermark will appear under UV source.