

Report Number : EGL1700914830

December 22, 2022



EUROPEAN GEMOLOGICAL LABORATORY

**GRADING RESULTS**

**Natural Diamond**

Shape & Cut Style                      Round Brilliant

Carat Weight                              0.90 Ct.

Color Grade                                G

Clarity Grade                               VS1

Cut Grade                                    Excellent

**ADDITIONAL GRADING INFORMATION**

Measurements                            6.05 - 5.98 x 3.84 mm

Polish                                        Excellent

Symmetry                                   Excellent

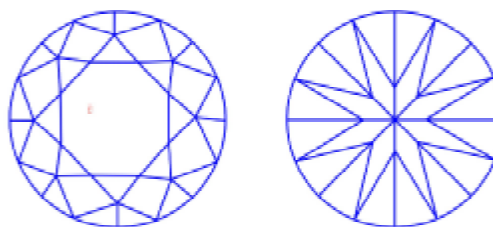
Fluorescence                              Slight

**COMMENTS**

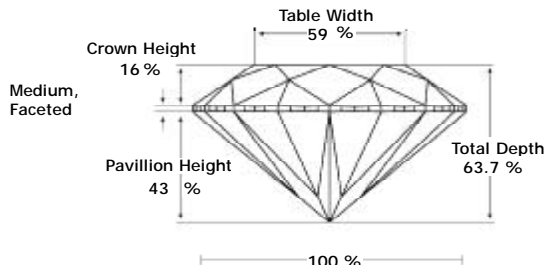
- Report number appears on the girdle.
- "EXCELLENT IDEAL CUT"-The quality of the cut of this diamond achieves Excellence in symmetry and proportions, thus obtaining the optimal dispersion of light and brilliance.

**Clarity Representation - Magnification: x10**

Internal characteristics shown in red. External characteristics and naturals shown in green. Extra facets shown in black. Symbols indicate nature and location of identified characteristics, not their actual size. Hairline feathers in girdle, minor bearding, and minor details of polish and finish not shown.



**PROPORTIONS DIAGRAM**



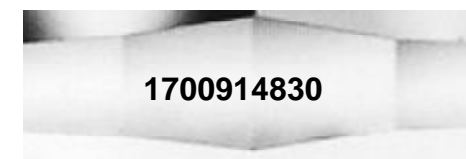
\* Profile for representation purposes only

**ISO 9001-2000 / -IQNet-**

**INTERNATIONAL CLARITY SCALE**

**INTERNATIONAL COLOR SCALE**

Flawless	Internally Flawless	Colorless	D E F
Very Very Slight Inclusion	VVS1	Near Colorless	* G *
	VVS2		H I J
Very Slight Inclusion	* VS1 *	Tinted White	K L M
	VS2		N O P Q R
Slight Inclusion	SI1	Very Light Yellow	S-Z
	SI2		Fancy Yellow
	SI3		
Inclusion	I1	Light Yellow	S-Z
	I2		
	I3		



Online verification service at:  
[www.eqlhk.com.hk](http://www.eqlhk.com.hk)

Note: EGL watermark will appear under UV source.