

Report Number : EGL1701097328

May 15, 2023



EUROPEAN GEMOLOGICAL LABORATORY

GRADING RESULTS

Natural Diamond

Shape & Cut Style Round Brilliant

Carat Weight 0.91 Ct.

Color Grade G

Clarity Grade VVS2

Cut Grade Excellent

ADDITIONAL GRADING INFORMATION

Measurements 6.12 - 6.03 x 3.82 mm

Polish Excellent

Symmetry Excellent

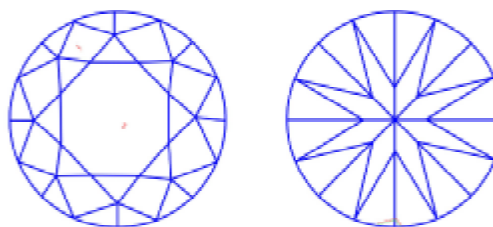
Fluorescence Faint

COMMENTS

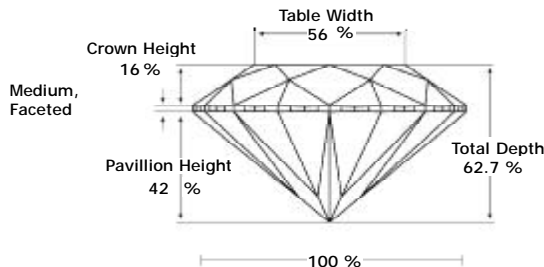
- Report number appears on the girdle.
- "EXCELLENT IDEAL CUT"-The quality of the cut of this diamond achieves Excellence in symmetry and proportions, thus obtaining the optimal dispersion of light and brilliance.

Clarity Representation - Magnification: x10

Internal characteristics shown in red. External characteristics and naturals shown in green. Extra facets shown in black. Symbols indicate nature and location of identified characteristics, not their actual size. Hairline feathers in girdle, minor bearding, and minor details of polish and finish not shown.



PROPORTIONS DIAGRAM



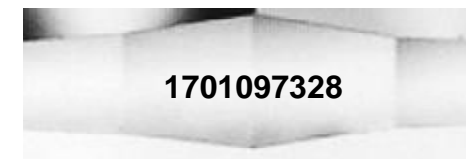
* Profile for representation purposes only

ISO 9001-2000 / -IQNet-

INTERNATIONAL CLARITY SCALE

INTERNATIONAL COLOR SCALE

| | | | | |
|----------------------------|---------------------|----------------|-------------------|-----------------------|
| Flawless | Internally Flawless | Colorless | D E F | |
| Very Very Slight Inclusion | VVS1 | Near Colorless | * G * | |
| | * VVS2 * | | H I J | |
| Very Slight Inclusion | VS1 | Tinted White | K L M | |
| | VS2 | | Very Light Yellow | N O P Q R |
| Slight Inclusion | SI1 | Light Yellow | | S-Z |
| | SI2 | | | |
| | SI3 | Fancy Yellow | | |
| Inclusion | I1 | | | |
| | I2 | | | |
| | I3 | | | |



Online verification service at:
www.eglhk.com.hk

Note: EGL watermark will appear under UV source.