

Report Number : EGL1701524929

October 06, 2024



EUROPEAN GEMOLOGICAL LABORATORY

GRADING RESULTS

Natural Diamond

Shape & Cut Style Round Brilliant

Carat Weight 1.55 Ct.

Color Grade G

Clarity Grade VS2

Cut Grade Excellent

ADDITIONAL GRADING INFORMATION

Measurements 7.52 - 7.48 x 4.54 mm

Polish Excellent

Symmetry Excellent

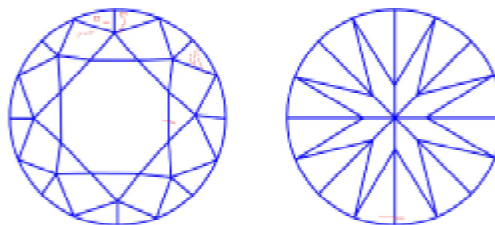
Fluorescence Slight

COMMENTS

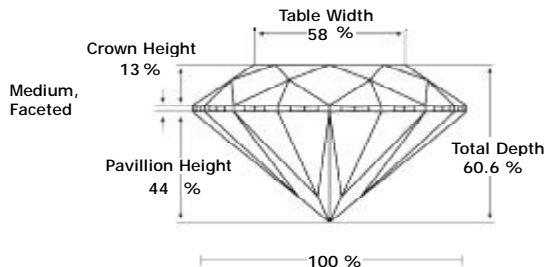
- Report number appears on the girdle.
- "EXCELLENT IDEAL CUT"-The quality of the cut of this diamond achieves Excellence in symmetry and proportions, thus obtaining the optimal dispersion of light and brilliance.

Clarity Representation - Magnification: x10

Internal characteristics shown in red. External characteristics and naturals shown in green. Extra facets shown in black. Symbols indicate nature and location of identified characteristics, not their actual size. Hairline feathers in girdle, minor bearding, and minor details of polish and finish not shown.



PROPORTIONS DIAGRAM



* Profile for representation purposes only

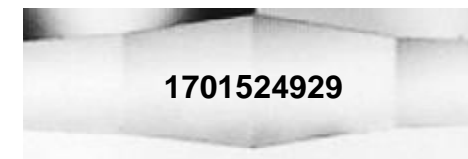
ISO 9001-2000 / -IQNet-

INTERNATIONAL CLARITY SCALE

Flawless	Internally Flawless
Very Very Slight Inclusion	VVS1
	VVS2
Very Slight Inclusion	VS1
	* VS2 *
Slight Inclusion	SI1
	SI2
	SI3
Inclusion	I1
	I2
	I3

INTERNATIONAL COLOR SCALE

Colorless	D E F
Near Colorless	* G *
	H I J
Tinted White	K L M
Very Light Yellow	N O P Q R
	S-Z
Fancy Yellow	



Online verification service at:
www.eglhk.com.hk

Note: EGL watermark will appear under UV source.