



553250597

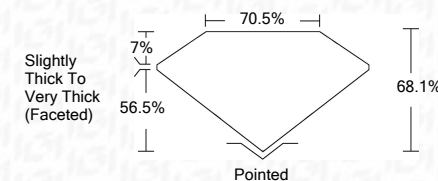
DIAMOND REPORT **ELECTRONIC COPY**



December 25, 2022
 IGI Report Number 553250597
 Description NATURAL DIAMOND
 Shape and Cutting Style CUSHION MODIFIED BRILLIANT
 Measurements 11.57 x 9.38 x 6.39 mm

GRADING RESULTS

Carat Weight 5.53 CARATS
 Color Grade G
 Clarity Grade SI 2



December 25, 2022
 IGI Report Number 553250597
 Description NATURAL DIAMOND
 Shape and Cutting Style CUSHION MODIFIED BRILLIANT
 Measurements 11.57 x 9.38 x 6.39 mm

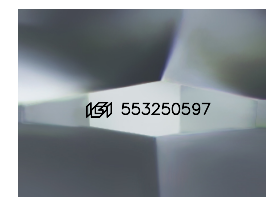
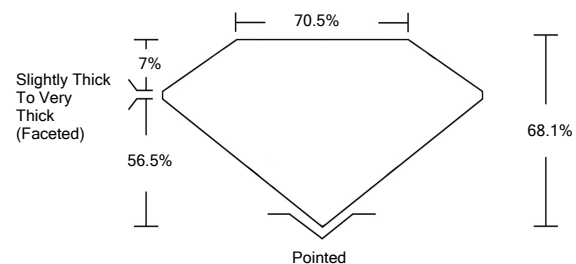
GRADING RESULTS

Carat Weight 5.53 CARATS
 Color Grade G
 Clarity Grade SI 2

ADDITIONAL GRADING INFORMATION

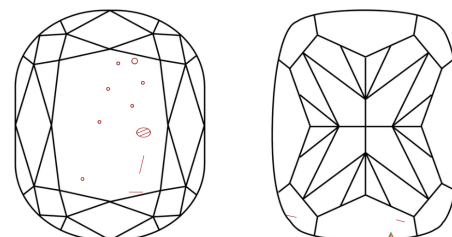
Polish VERY GOOD
 Symmetry EXCELLENT
 Fluorescence NONE
 Inscription(s) IGI 553250597

PROPORTIONS



Sample Image Used

CLARITY CHARACTERISTICS



KEY TO SYMBOLS

Red symbols indicate internal characteristics.
 Green symbols indicate external characteristics.

COLOR

D - F	G - J	K - M	N - R	S - Z	FANCY
Colorless	Near Colorless	Slightly Tinted	Very Light Color	Light Color	

CLARITY

IF	VVS ¹⁻²	VS ¹⁻²	SI ¹⁻²	I ¹⁻³
Internally Flawless	Very Very Slightly Included	Very Slightly Included	Slightly Included	Included

ADDITIONAL GRADING INFORMATION

Polish VERY GOOD
 Symmetry EXCELLENT
 Fluorescence NONE
 Inscription(s) IGI 553250597



IGI



December 25, 2022
 IGI Report No 553250597
 NATURAL DIAMOND
 CUSHION MODIFIED BRILLIANT
 11.57 x 9.38 x 6.39 mm
 Carat Weight 5.53 CARATS
 Color Grade G
 Clarity Grade SI 2
 Depth 68.1%
 Table 70.5%
 Girdle Slightly Thick To Very Thick (Faceted)
 Culet Pointed
 Polish VERY GOOD
 Symmetry EXCELLENT
 Fluorescence NONE
 Inscription(s) IGI 553250597