

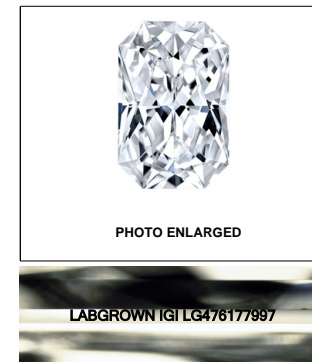


Diagram illustrating the proportions of a diamond-shaped object (likely a gemstone or tool head) with the following dimensions:

- Thin: 12%
- Top Width: 67%
- Left Side: 54.5%
- Right Side: 68.2%
- Pointed: (Bottom Point)

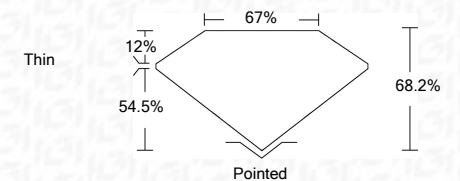
Red symbols indicate internal characteristics.  
Green symbols indicate external characteristics.

COLOR GRADING SCALE	CL		NC		FT		VLT		LT	
	COLORLESS D-F		NEAR COLORLESS G-J		FAINT K-M		VERY LIGHT N-R		LIGHT S-Z	
CLARITY (10x) GRADING SCALE	FL IF		VVS		VS		SI		I	
	FLAWLESS INTERNALLY FLAWLESS		VERY VERY SLIGHTLY INCLUDED		VERY SLIGHTLY INCLUDED		SLIGHTLY INCLUDED		INCLUDED	

**LASERSCRIBE<sup>SM</sup>**

## LABORATORY GROWN DIAMOND REPORT

06/01/2021	
IGI Report Number	LQ476177997
Shape and Cutting Style	CUT CORNERED RECTANGULAR MODIFIED BRILLIANT
Measurements	9.46 x 7.70 x 5.25 mm
GRADING RESULTS	
Carat Weight	3.06 CARATS
Color Grade	I
Clarity Grade	VS 1



Polish	EXCELLENT
Symmetry	EXCELLENT
Fluorescence	NONE
Inscription(s)	LABGROWN IGI LG476177997

Comments: This Laboratory Grown Diamond was created by Chemical Vapor Deposition (CVD) growth process and may include post-growth treatment  
Type IIa

